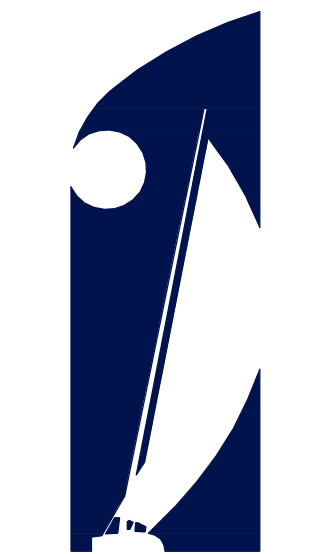


JOB NO. : 06014.2  
DATE: 2-23-09  
DRAWN BY: AS/STAFF  
CHECKED BY: DWR  
APPROVED BY: \_\_\_\_\_  
OWNER

BID SET	11.12.09
ASI	2.12.10
▲	3.16.10
▲	3.22.10



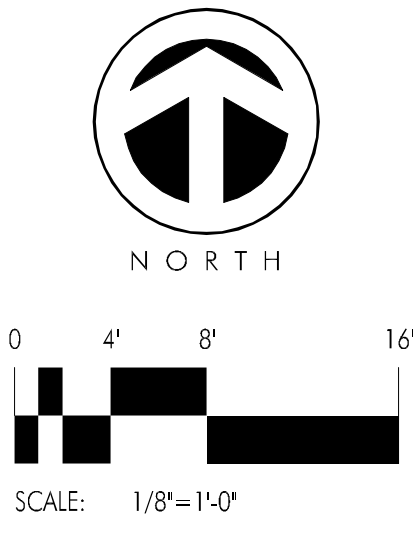
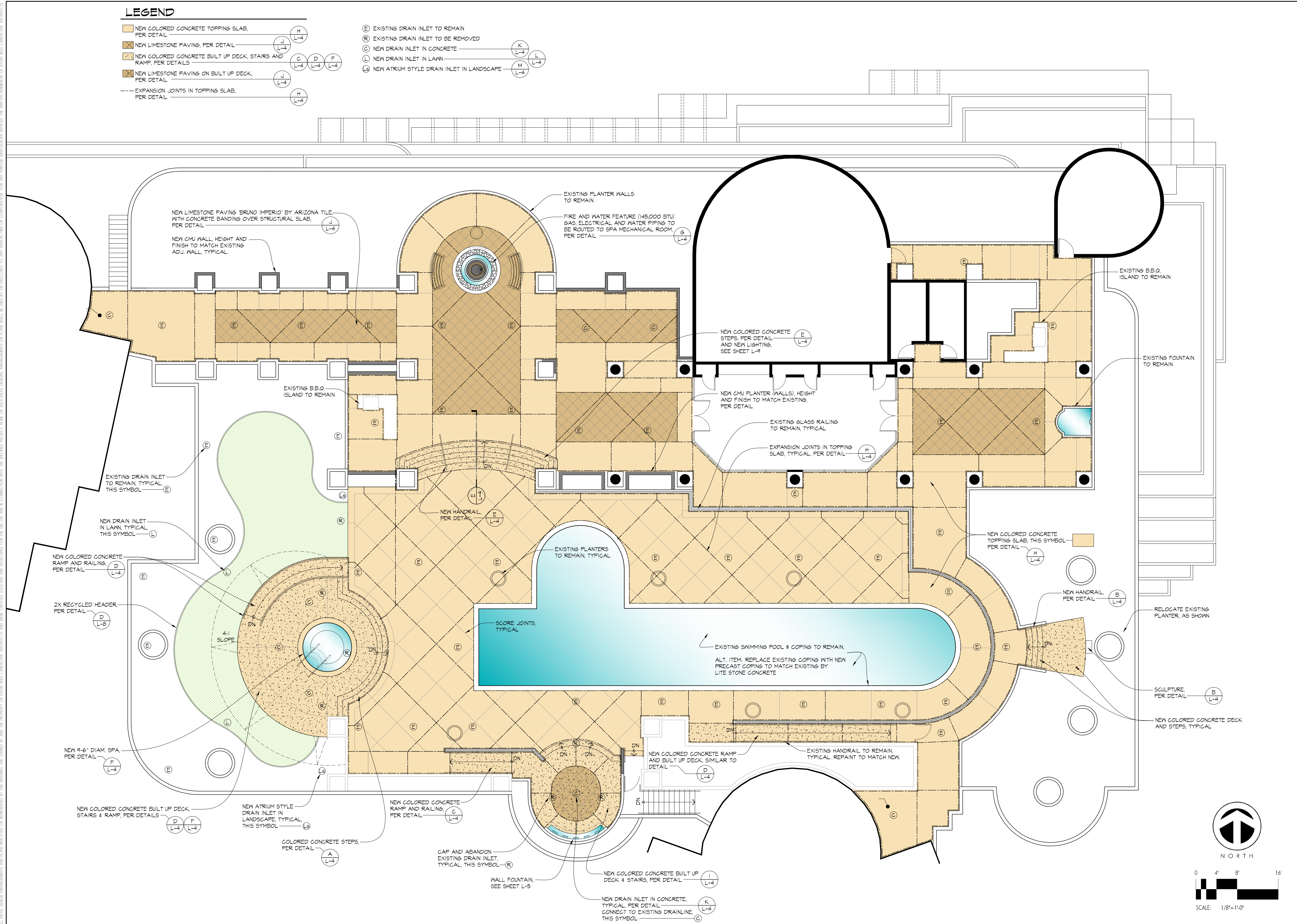
THE  
HARBOR  
CLUB  
100 HARBOR DRIVE,  
SAN DIEGO CA, 92101

LANDSCAPE  
CONSTRUCTION  
PLAN

SHEET  
**L-1**  
OF 10

LEGEND

- NEW COLORED CONCRETE TOPPING SLAB, PER DETAIL
- NEW LIMESTONE PAVING, PER DETAIL
- NEW COLORED CONCRETE BUILT UP DECK, STAIRS AND RAMP, PER DETAILS
- NEW LIMESTONE PAVING ON BUILT UP DECK, PER DETAIL
- EXPANSION JOINTS IN TOPPING SLAB, PER DETAIL
- EXISTING DRAIN INLET TO REMAIN
- EXISTING DRAIN INLET TO BE REMOVED
- NEW DRAIN INLET IN CONCRETE
- NEW DRAIN INLET IN LAWN
- NEW ATRIUM STYLE DRAIN INLET IN LANDSCAPE



RESPONSIBLE CHARGE: \_\_\_\_\_ DRAFTED BY: \_\_\_\_\_ REVISIONS: \_\_\_\_\_ CHECKED BY: \_\_\_\_\_ ALL LEGAL DESIGN ARRANGEMENTS AND PLANS REPRODUCED OR SUBMITTED BY THE DRAWING ARE OWNED BY AND THE PROPERTY OF DAVID REED LANDSCAPE ARCHITECTS AND WILL BE USED BY OR IN CONNECTION WITH THE SPECIFIC PROJECT, WORK OR SITE DESIGN DESCRIBED HEREIN. ANY REUSE, REPRODUCTION, OR MODIFICATION OF ANY PART OF THIS DRAWING WITHOUT THE WRITTEN PERMISSION OF DAVID REED LANDSCAPE ARCHITECTS IS PROHIBITED.