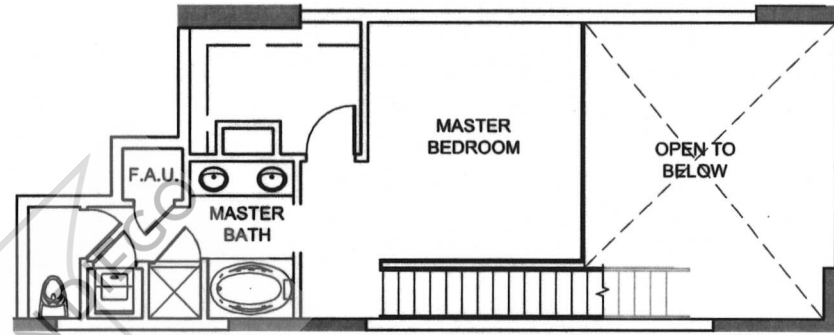
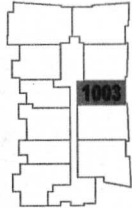


LOWER LEVEL

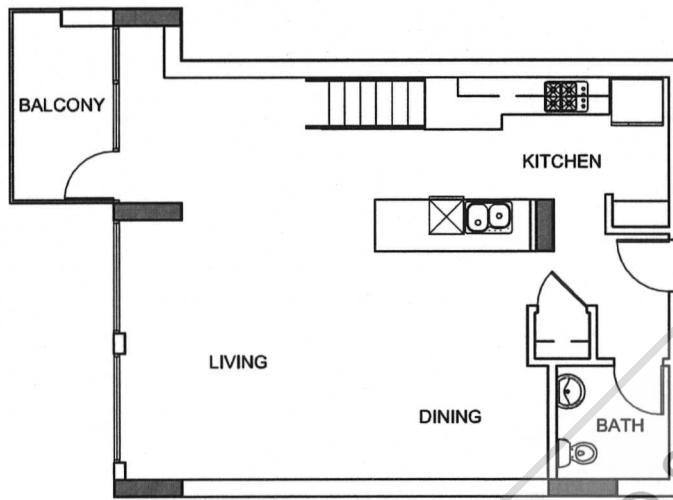


UPPER LEVEL

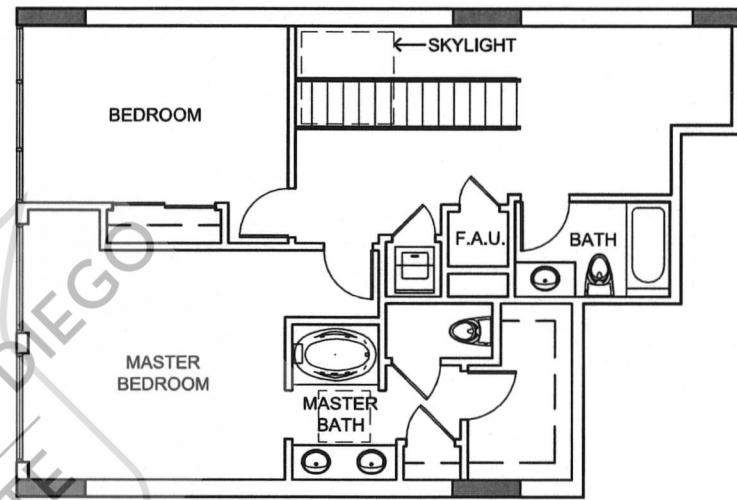


WELCOME TO SAIN
REAL ESTATE

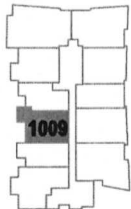
| | |
|--|---------------------|
| UNIT TYPE 1003 | |
| 1 BEDROOM/ 1-1/2 BATH PENTHOUSE | |
| 10TH - 11TH FLOOR | |
| ENCLOSED AREA | 1414 SQ. FT. |
| BALCONY / TERRACE | 0 SQ. FT. |
| TOTAL AREA | 1414 SQ. FT. |



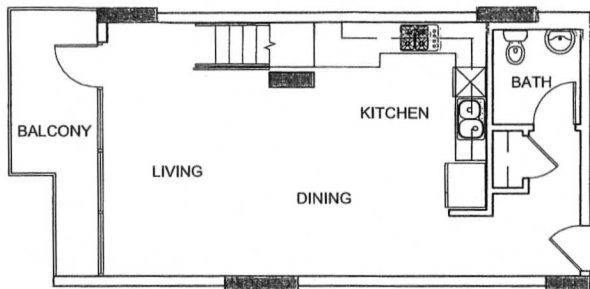
LOWER LEVEL



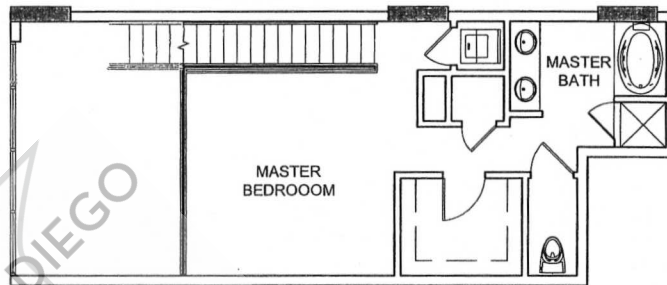
UPPER LEVEL



| | |
|---------------------------------|--------------|
| UNIT TYPE 1009 | |
| 2 BEDROOM/ 2-1/2 BATH PENTHOUSE | |
| 10TH - 11TH FLOOR | |
| ENCLOSED AREA | 1718 SQ. FT. |
| BALCONY / TERRACE | 101 SQ. FT. |
| TOTAL AREA | 1819 SQ. FT. |



LOWER LEVEL



UPPER LEVEL

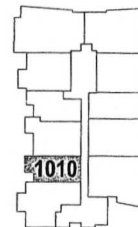
FLOOR PLAN
SCALE: 1/8" = 1'-0"



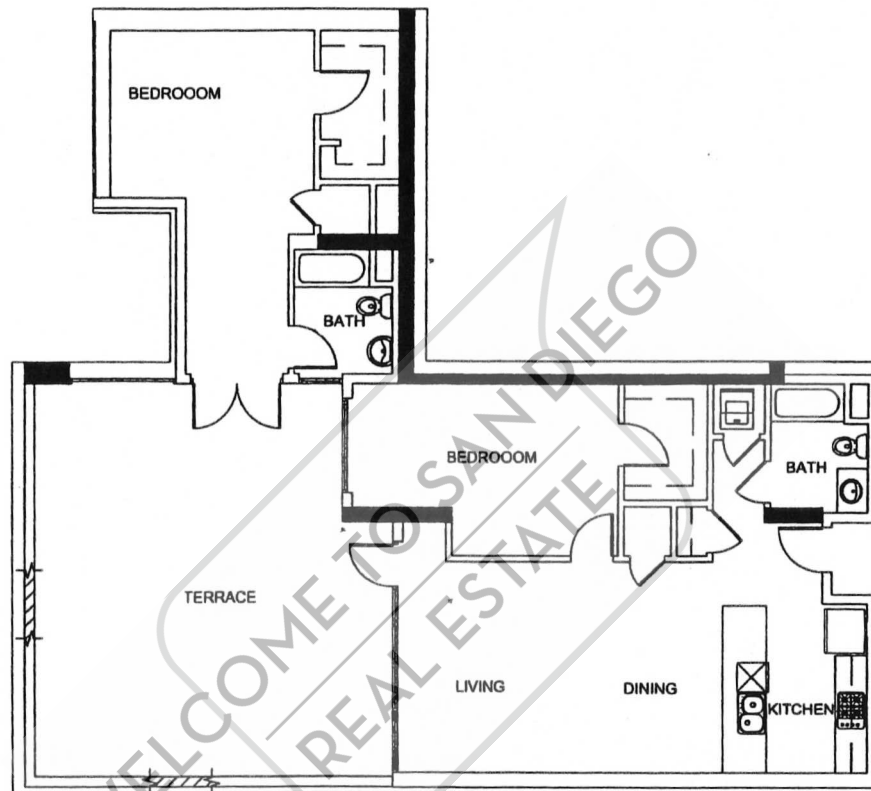
CITYMARK APERTURE

THE DEVELOPER RESERVES THE RIGHT TO MAKE MODIFICATIONS AND CHANGES TO BUILDING DESIGN, SPECIFICATIONS, FEATURES, CEILING HEIGHTS AND FLOOR PLANS WITHOUT NOTIFICATION. ROOM SETS ARE FOR ILLUSTRATION PURPOSES ONLY. THESE MATTERS WILL BE GOVERNED ENTIRELY BY THE TERMS OF THE APPLICABLE PURCHASE CONTRACT IN EACH CASE.

| | |
|---------------------------------|--------------|
| UNIT TYPE | 1010 |
| 1 BEDROOM/ 1-1/2 BATH PENTHOUSE | |
| 10TH - 11TH FLOOR | |
| ENCLOSED AREA | 1318 SQ. FT. |
| BALCONY / TERRACE | 89 SQ. FT. |
| TOTAL AREA | 1407 SQ. FT. |



1515 MORENA BLVD.
SAN DIEGO, CA 92110
TEL (619) 275-7710
FAX (619) 275-7715

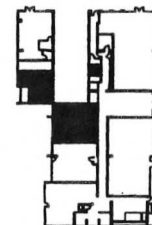


FLOOR PLAN
SCALE: 1/8" = 1'-0"



CITYMARK APERTURE

THE DEVELOPER RESERVES THE RIGHT TO MAKE MODIFICATIONS AND CHANGES TO BUILDING DESIGN, SPECIFICATIONS, FEATURES, CEILING HEIGHTS AND FLOOR PLANS WITHOUT NOTIFICATION. ROOM SIZES ARE FOR ILLUSTRATION PURPOSES ONLY. THESE MATTERS WILL BE GOVERNED ENTIRELY BY THE TERMS OF THE APPLICABLE PURCHASE CONTRACT IN EACH CASE.

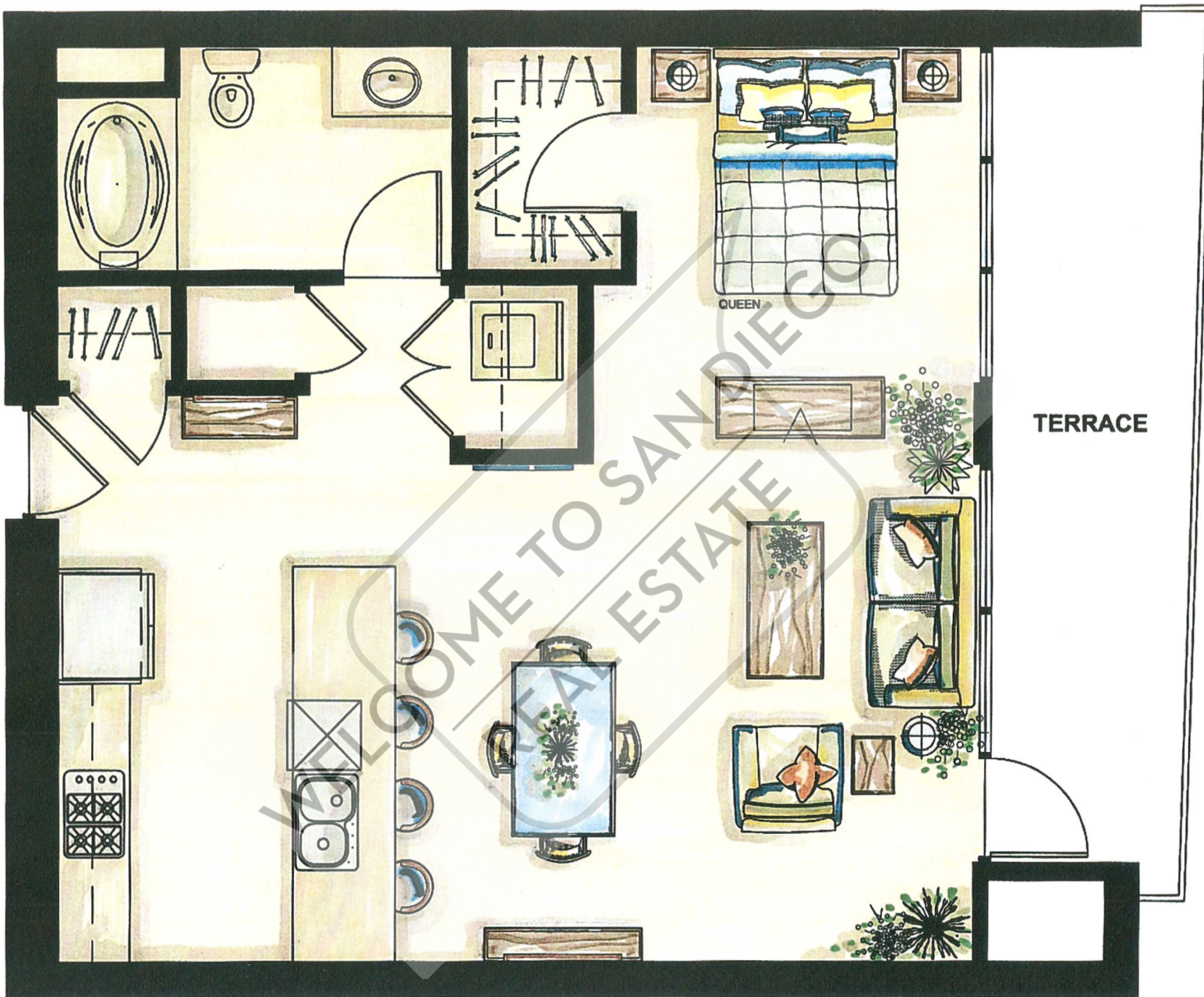


1515 MORENA BLVD.
SAN DIEGO, CA 92110
TEL (619) 276-7710
FAX (619) 276-7715

| | |
|-------------------|--------------|
| UNIT TYPE | A - 107 |
| 2 BEDROOM/ 2 BA | |
| 1ST FLOOR ONLY | |
| ENCLOSED AREA | 1360 SQ. FT. |
| BALCONY / TERRACE | 600 SQ. FT. |
| TOTAL AREA | 1960 SQ. FT. |

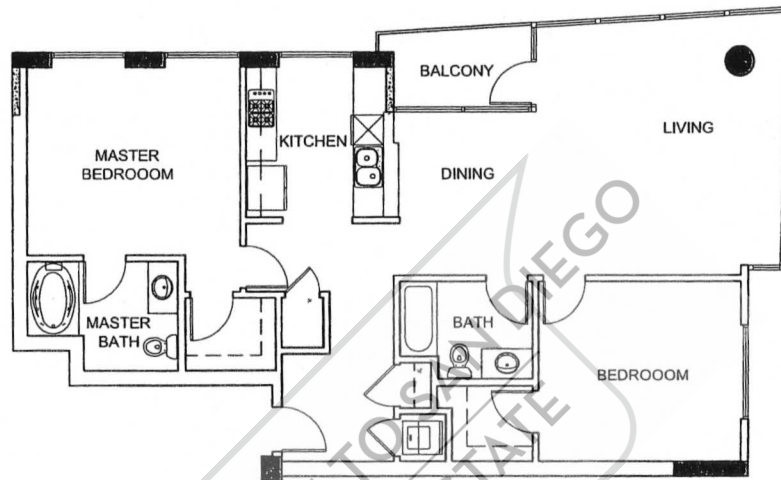






UNIT N

1/4" = 1'-0"



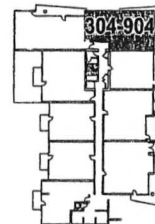
FLOOR PLAN
SCALE: 1/8" = 1'-0"



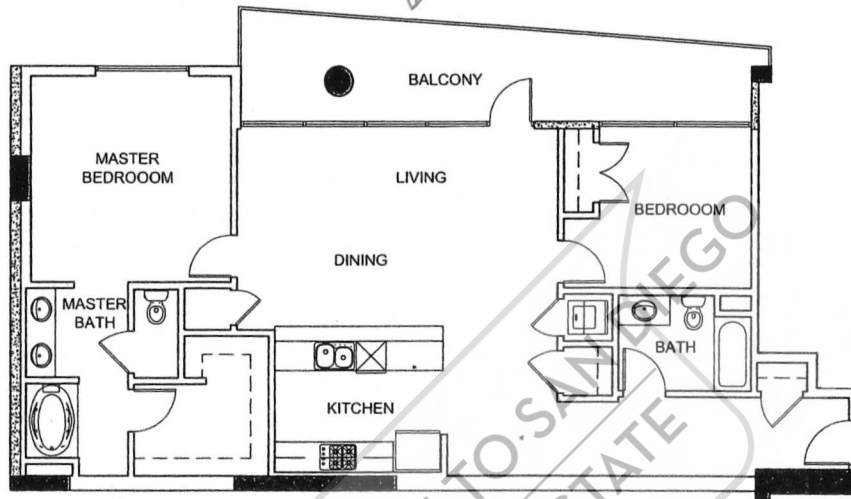
CITYMARK APERTURE

THE DEVELOPER RESERVES THE RIGHT TO MAKE MODIFICATIONS AND CHANGES TO BUILDING DESIGN, SPECIFICATIONS, FEATURES, CEILING HEIGHTS AND FLOOR PLANS WITHOUT NOTIFICATION. ROOM SETS ARE FOR ILLUSTRATION PURPOSES ONLY. THESE MATTERS WILL BE GOVERNED ENTIRELY BY THE TERMS OF THE APPLICABLE PURCHASE CONTRACT IN EACH CASE.

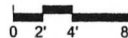
| | |
|-------------------|--------------|
| UNIT TYPE | P - 304-904 |
| 2 BEDROOM/ 2 BA | |
| 3RD - 9TH FLOOR | |
| ENCLOSED AREA | 1282 SQ. FT. |
| BALCONY / TERRACE | 50 SQ. FT. |
| TOTAL AREA | 1332 SQ. FT. |



1515 MORENA BLVD.
SAN DIEGO, CA 92110
TEL (619) 276-7710
FAX (619) 276-7715



FLOOR PLAN
SCALE: 1/8" = 1'-0"

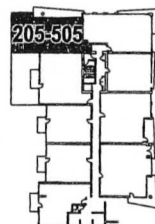


CITYMARK APERTURE

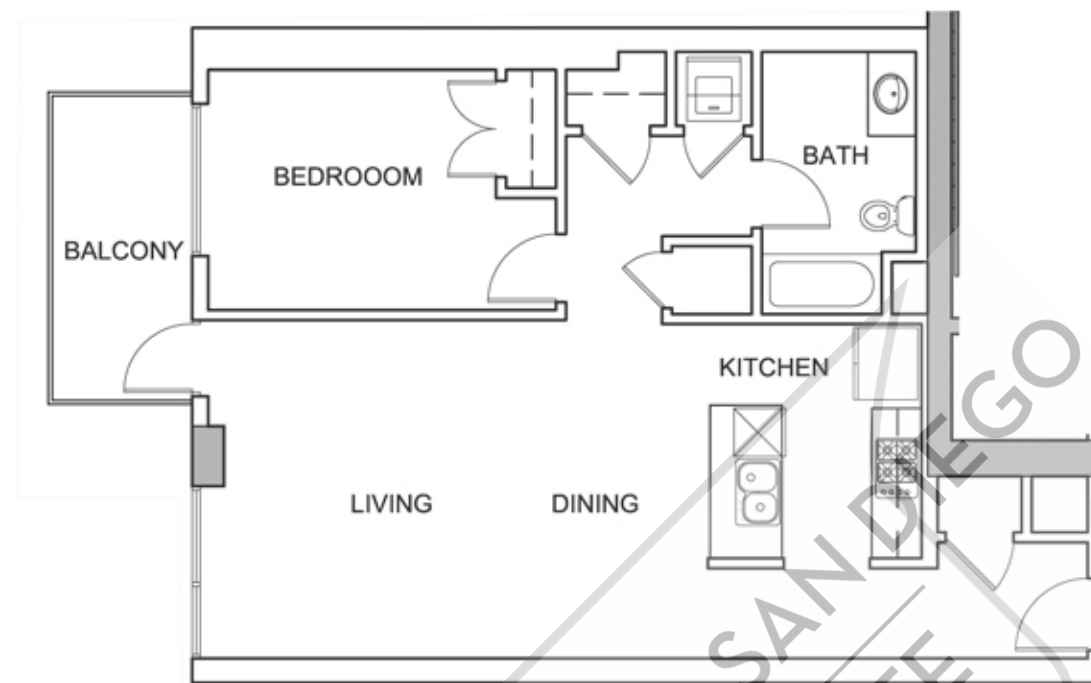
THE DEVELOPER RESERVES THE RIGHT TO MAKE MODIFICATIONS AND CHANGES TO BUILDING DESIGN, SPECIFICATIONS, FEATURES, CEILING HEIGHTS AND FLOOR PLANS WITHOUT NOTIFICATION. ROOM SETS ARE FOR ILLUSTRATION PURPOSES ONLY. THESE MATTERS WILL BE GOVERNED ENTIRELY BY THE TERMS OF THE APPLICABLE PURCHASE CONTRACT IN EACH CASE.

#205 (\$602K w/ metro)

| | |
|-------------------|--------------|
| UNIT TYPE | Q - 205-505 |
| 2 BEDROOM/ 2 BA | |
| 3RD - 5TH FLOOR | |
| ENCLOSED AREA | 1351 SQ. FT. |
| BALCONY / TERRACE | 228 SQ. FT. |
| TOTAL AREA | 1519 SQ. FT. |



1515 MORENA BLVD.
SAN DIEGO, CA 92110
TEL (619) 276-7715
FAX (619) 276-7715

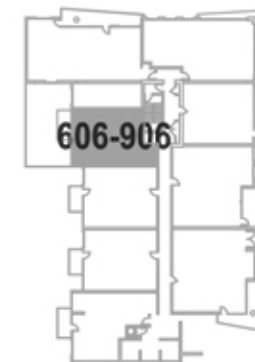


FLOOR PLAN
SCALE: 1/8" = 1'-0"



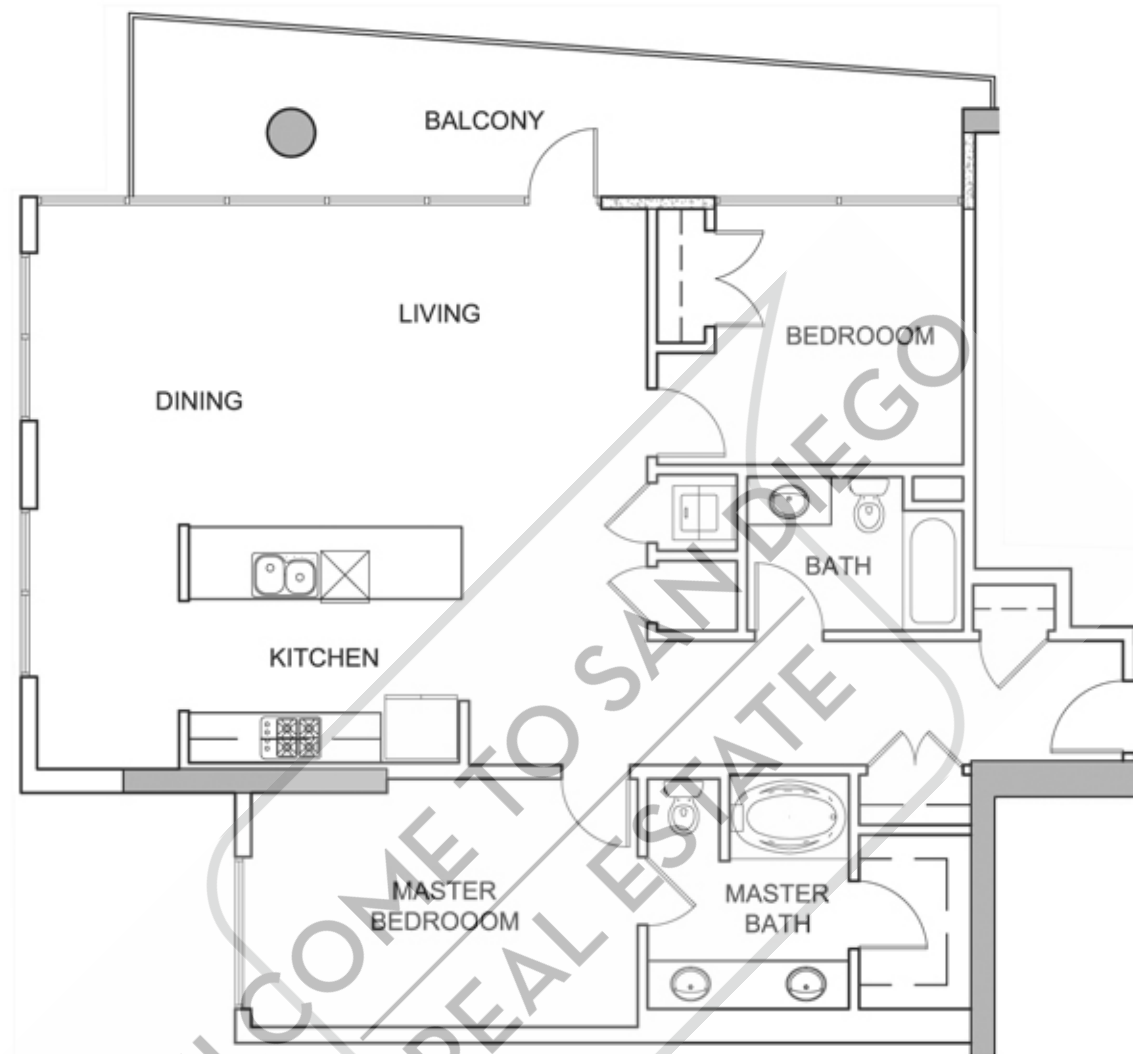
CITYMARK APERTURE

THE DEVELOPER RESERVES THE RIGHT TO MAKE MODIFICATIONS AND CHANGES TO BUILDING DESIGN, SPECIFICATIONS, FEATURES, CEILING HEIGHTS AND FLOOR PLANS WITHOUT NOTIFICATION. ROOM SETS ARE FOR ILLUSTRATION PURPOSES ONLY. THESE MATTERS WILL BE GOVERNED ENTIRELY BY THE TERMS OF THE APPLICABLE PURCHASE CONTRACT IN EACH CASE.



1515 MORENA BLVD.
SAN DIEGO, CA 92110
TEL (619) 276-7710
FAX (619) 276-7715

| | |
|-------------------|-------------|
| UNIT TYPE | T - 606-906 |
| 1 BEDROOM/ 1 BA | |
| 6TH - 9TH FLOOR | |
| ENCLOSED AREA | 847 SQ. FT. |
| BALCONY / TERRACE | 74 SQ. FT. |
| TOTAL AREA | 921 SQ. FT. |



FLOOR PLAN
SCALE: 1/8" = 1'-0"



CITYMARK APERTURE

THE DEVELOPER RESERVES THE RIGHT TO MAKE MODIFICATIONS AND CHANGES TO BUILDING DESIGN, SPECIFICATIONS, FEATURES, CEILING HEIGHTS AND FLOOR PLANS WITHOUT NOTIFICATION. ROOM SETS ARE FOR ILLUSTRATION PURPOSES ONLY. THESE MATTERS WILL BE GOVERNED ENTIRELY BY THE TERMS OF THE APPLICABLE PURCHASE CONTRACT IN EACH CASE.

| | |
|-------------------|--------------|
| UNIT TYPE | U - 705-905 |
| 2 BEDROOM/ 2 BA | |
| 7TH - 9TH FLOOR | |
| ENCLOSED AREA | 1313 SQ. FT. |
| BALCONY / TERRACE | 220 SQ. FT. |
| TOTAL AREA | 1533 SQ. FT. |

