

BAYSIDE

at the Embarcadero

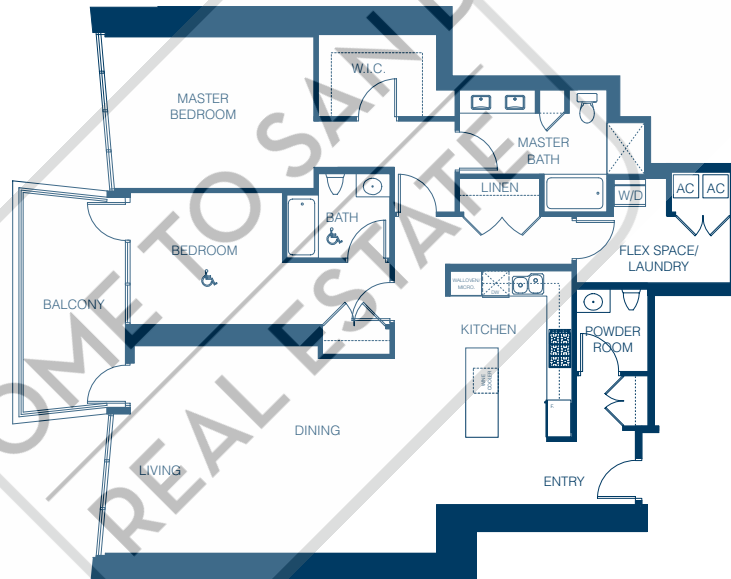
TYPE B

Suites 501-2801

2 BR

1,811 sq. ft. approx.

Level 5 - 28



Note: 501 will have a different kitchen layout. Only has 4 burners at cooktop.



All reference to square footage or floor area are approximate and are based upon the gross square footage of the Residential Units shown on the architectural plans. The actual square footage of the Residential Units will be less than the gross square footage. Buyer should not rely upon any advertising materials to determine the size of Buyer's Residential Unit. Only the as-built condition will determine the square footage of Buyer's Condominium. All renderings, floor plans and site plans shown in the sales office, brochures and other advertising materials are approximate illustrations only and are subject to change. Ask a Bayside sales person for details.

BAYSIDE

at the Embarcadero

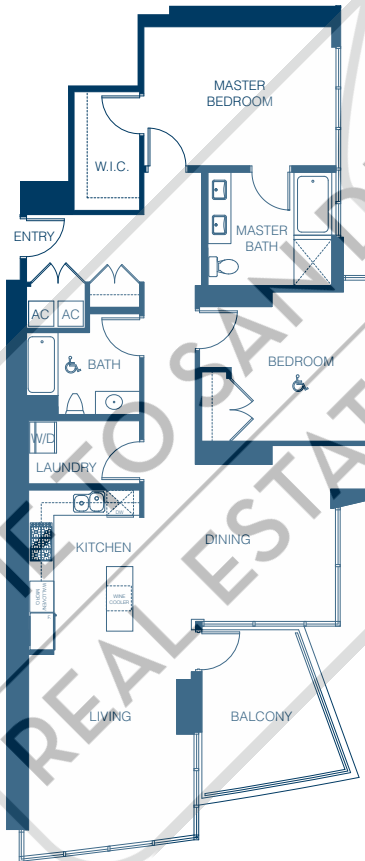
TYPE E

Suites 301, 403, 504-2804

2 BR

1,462 - 1,494 sq. ft. approx.

Level 3 - 28



301, 403,
504-2804
(301 has larger roof deck)

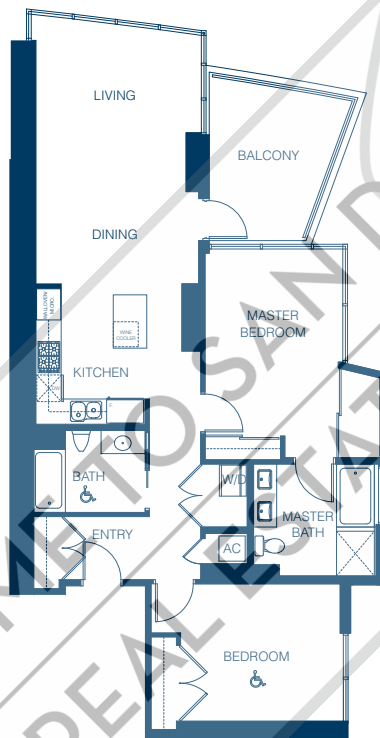


All reference to square footage or floor area are approximate and are based upon the gross square footage of the Residential Units shown on the architectural plans. The actual square footage of the Residential Units will be less than the gross square footage. Buyer should not rely upon any advertising materials to determine the size of Buyer's Residential Unit. Only the as-built condition will determine the square footage of Buyer's Condominium. All renderings, floor plans and site plans shown in the sales office, brochures and other advertising materials are approximate illustrations only and are subject to change. Ask a Bayside sales person for details.

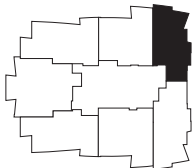
BAYSIDE

at the Embarcadero

TYPE F
Suites 404, 505-2805
2 BR
1,196 sq. ft. approx.
Level 4 - 28



404, 505-2805
(406 has larger roof deck)



All reference to square footage or floor area are approximate and are based upon the gross square footage of the Residential Units shown on the architectural plans. The actual square footage of the Residential Units will be less than the gross square footage. Buyer should not rely upon any advertising materials to determine the size of Buyer's Residential Unit. Only the as-built condition will determine the square footage of Buyer's Condominium. All renderings, floor plans and site plans shown in the sales office, brochures and other advertising materials are approximate illustrations only and are subject to change. Ask a Bayside sales person for details.

BAYSIDE

at the Embarcadero

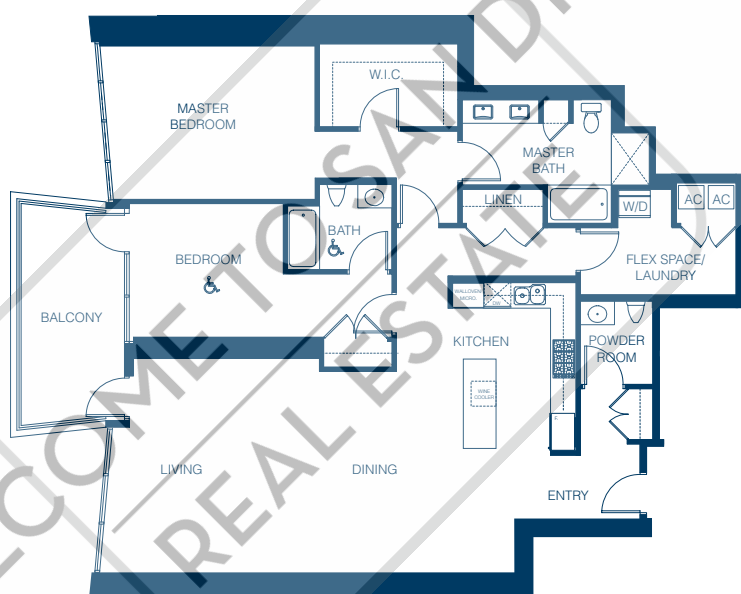
TYPE J

Suites 2901, 3601

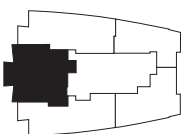
2 BR

1,860 sq. ft. approx.

Level 29 - 36



2901-3601

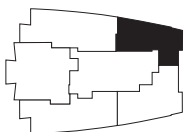
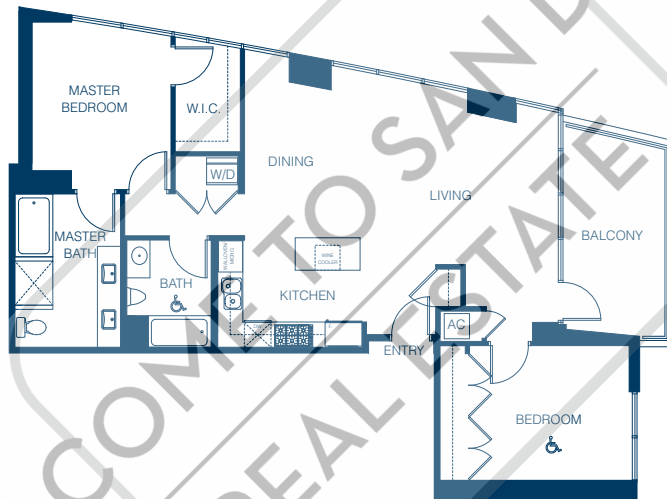


All reference to square footage or floor area are approximate and are based upon the gross square footage of the Residential Units shown on the architectural plans. The actual square footage of the Residential Units will be less than the gross square footage. Buyer should not rely upon any advertising materials to determine the size of Buyer's Residential Unit. Only the as-built condition will determine the square footage of Buyer's Condominium. All renderings, floor plans and site plans shown in the sales office, brochures and other advertising materials are approximate illustrations only and are subject to change. Ask a Bayside sales person for details.

BAYSIDE

at the Embarcadero

TYPE M
Suites 2904, 3004
2 BR
1,183 sq. ft. approx.
Level 29 - 30



2904, 3004



All reference to square footage or floor area are approximate and are based upon the gross square footage of the Residential Units shown on the architectural plans. The actual square footage of the Residential Units will be less than the gross square footage. Buyer should not rely upon any advertising materials to determine the size of Buyer's Residential Unit. Only the as-built condition will determine the square footage of Buyer's Condominium. All renderings, floor plans and site plans shown in the sales office, brochures and other advertising materials are approximate illustrations only and are subject to change. Ask a Bayside sales person for details.

BAYSIDE

at the Embarcadero

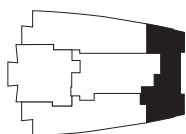
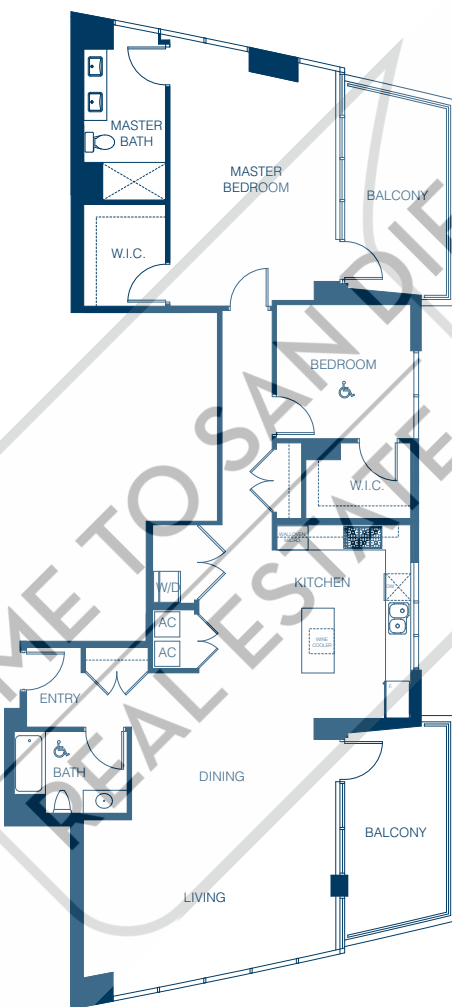
TYPE Q

Suites 3103, 3203

2 BR

1,606 sq. ft. approx.

Level 31 - 32



3103, 3203



All reference to square footage or floor area are approximate and are based upon the gross square footage of the Residential Units shown on the architectural plans. The actual square footage of the Residential Units will be less than the gross square footage. Buyer should not rely upon any advertising materials to determine the size of Buyer's Residential Unit. Only the as-built condition will determine the square footage of Buyer's Condominium. All renderings, floor plans and site plans shown in the sales office, brochures and other advertising materials are approximate illustrations only and are subject to change. Ask a Bayside sales person for details.