



PORTICO

SALES CENTER

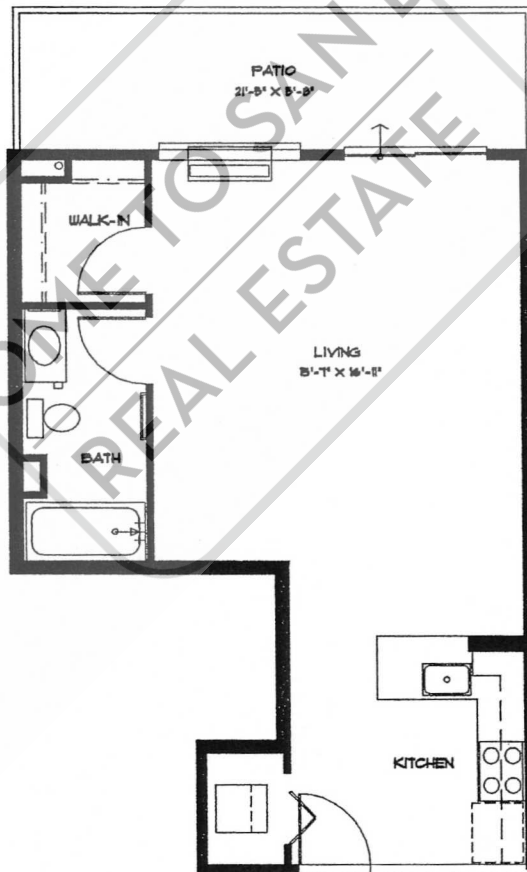
625 Second Avenue

San Diego, CA 92101

Phone: (619) 702-2354

Fax: (619) 702-2323

UNIT 200
STUDIO
552 SQ FT



Portico LLC reserves the right to make modifications and changes to floor plans, project design, specifications and features should they be necessary. Actual dimensions may vary. Please ask your salesperson to show you the actual blueprints for detailed information.

Printed 8/3/04



PORTICO

SALES CENTER

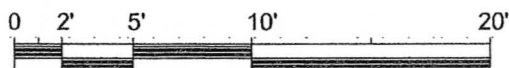
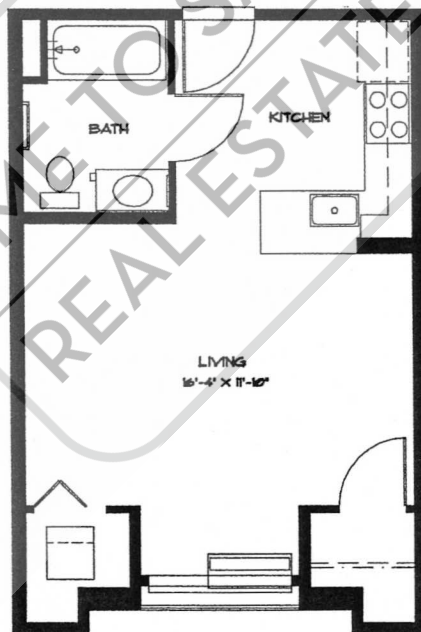
625 Second Avenue

San Diego, CA 92101

Phone: (619) 702-2354

Fax: (619) 702-2323

**UNITS 210 / 310
STUDIO
423 SQ FT**



Portico LLC reserves the right to make modifications and changes to floor plans, project design, specifications and features should they be necessary. Actual dimensions may vary. Please ask your salesperson to show you the actual blueprints for detailed information.

Printed 8/3/04



PORTICO

SALES CENTER

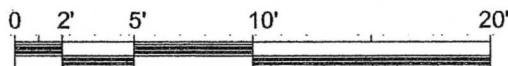
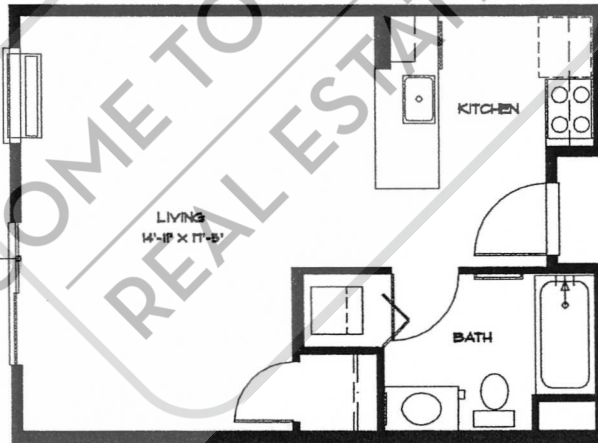
625 Second Avenue

San Diego, CA 92101

Phone: (619) 702-2354

Fax: (619) 702-2323

UNIT 216
STUDIO
446 SQ FT



Portico LLC reserves the right to make modifications and changes to floor plans, project design, specifications and features should they be necessary. Actual dimensions may vary. Please ask your salesperson to show you the actual blueprints for detailed information.

Printed 8/3/04



PORTICO

SALES CENTER

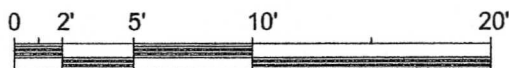
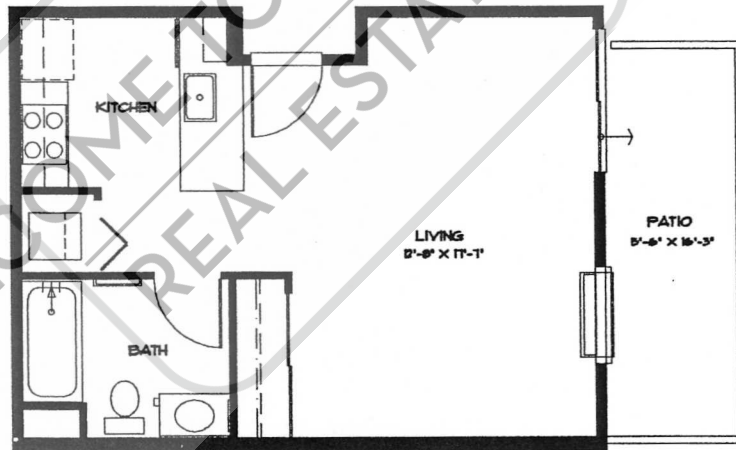
625 Second Avenue

San Diego, CA 92101

Phone: (619) 702-2354

Fax: (619) 702-2323

UNIT 218
STUDIO
450 SQ FT



Portico LLC reserves the right to make modifications and changes to floor plans, project design, specifications and features should they be necessary. Actual dimensions may vary. Please ask your salesperson to show you the actual blueprints for detailed information.

Printed 8/3/04



PORTICO

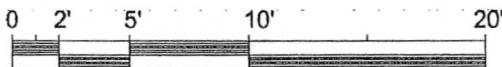
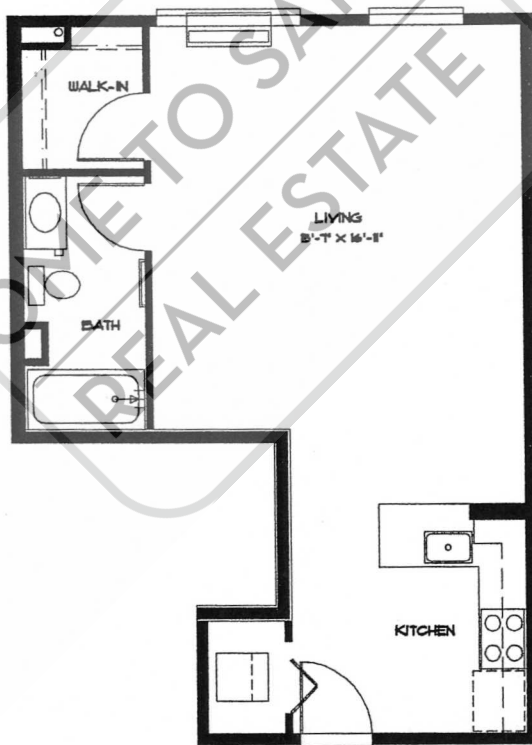
UNITS 300 / 400 / 500
STUDIO
552 SQ FT

SALES CENTER

625 Second Avenue
San Diego, CA 92101

Phone: (619) 702-2354

Fax: (619) 702-2323



Portico LLC reserves the right to make modifications and changes to floor plans, project design, specifications and features should they be necessary. Actual dimensions may vary. Please ask your salesperson to show you the actual blueprints for detailed information.

Printed 8/3/04



PORTICO

SALES CENTER

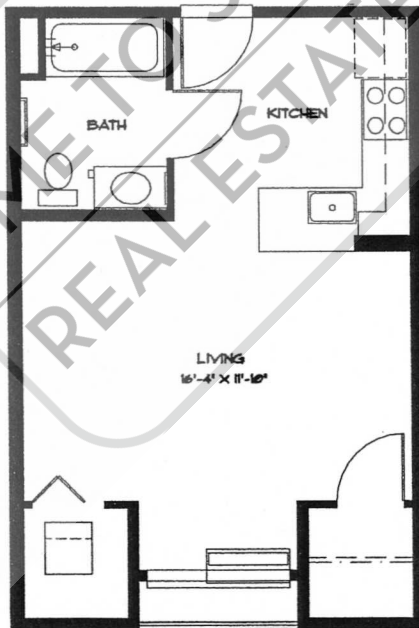
625 Second Avenue

San Diego, CA 92101

Phone: (619) 702-2354

Fax: (619) 702-2323

UNITS 410 / 510
STUDIO
427 SQ FT



Portico LLC reserves the right to make modifications and changes to floor plans, project design, specifications and features should they be necessary. Actual dimensions may vary. Please ask your salesperson to show you the actual blueprints for detailed information.

Printed 8/3/04