

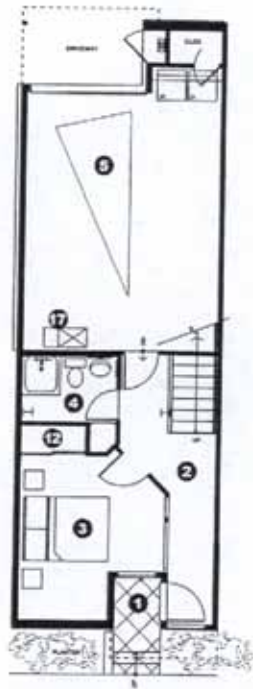
WELCOME TO SAN DIEGO
REAL ESTATE

ELEVATION **A**

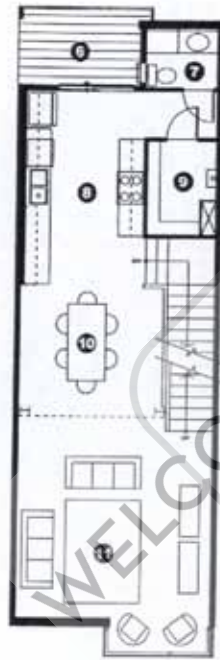
NORTH EXTERIOR ELEVATION - 'F' STREET

The project and design were
developed by the architect. All
rights reserved. No part of this
document may be reproduced or
transmitted in any form or by
any means, electronic, mechanical,
photocopying, recording, or by
any information storage and
retrieval system, without the
written permission of the
architect.

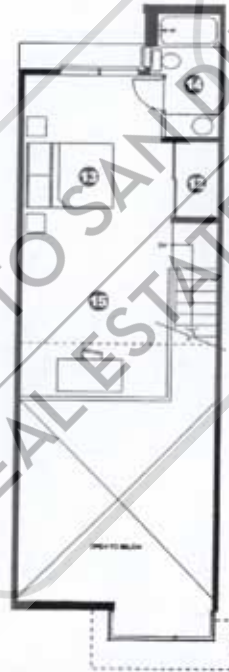
This project will undergo several modifications while under development and construction. We cannot be responsible for unanticipated changes in the model and construction. We do not accept responsibility for any representations made by anyone other than those of the officers of ROWHOME PARTNERSHIP LLC.



FIRST FLOOR PLAN



SECOND FLOOR PLAN

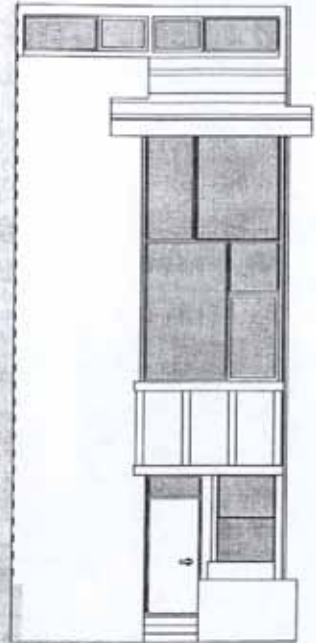


THIRD FLOOR PLAN

rowhouse

2

2+ BEDROOMS
2.5 BATHS
Liveable: 1,491 S.F.
Garage: 378 S.F.
Roof Deck: 60 S.F.

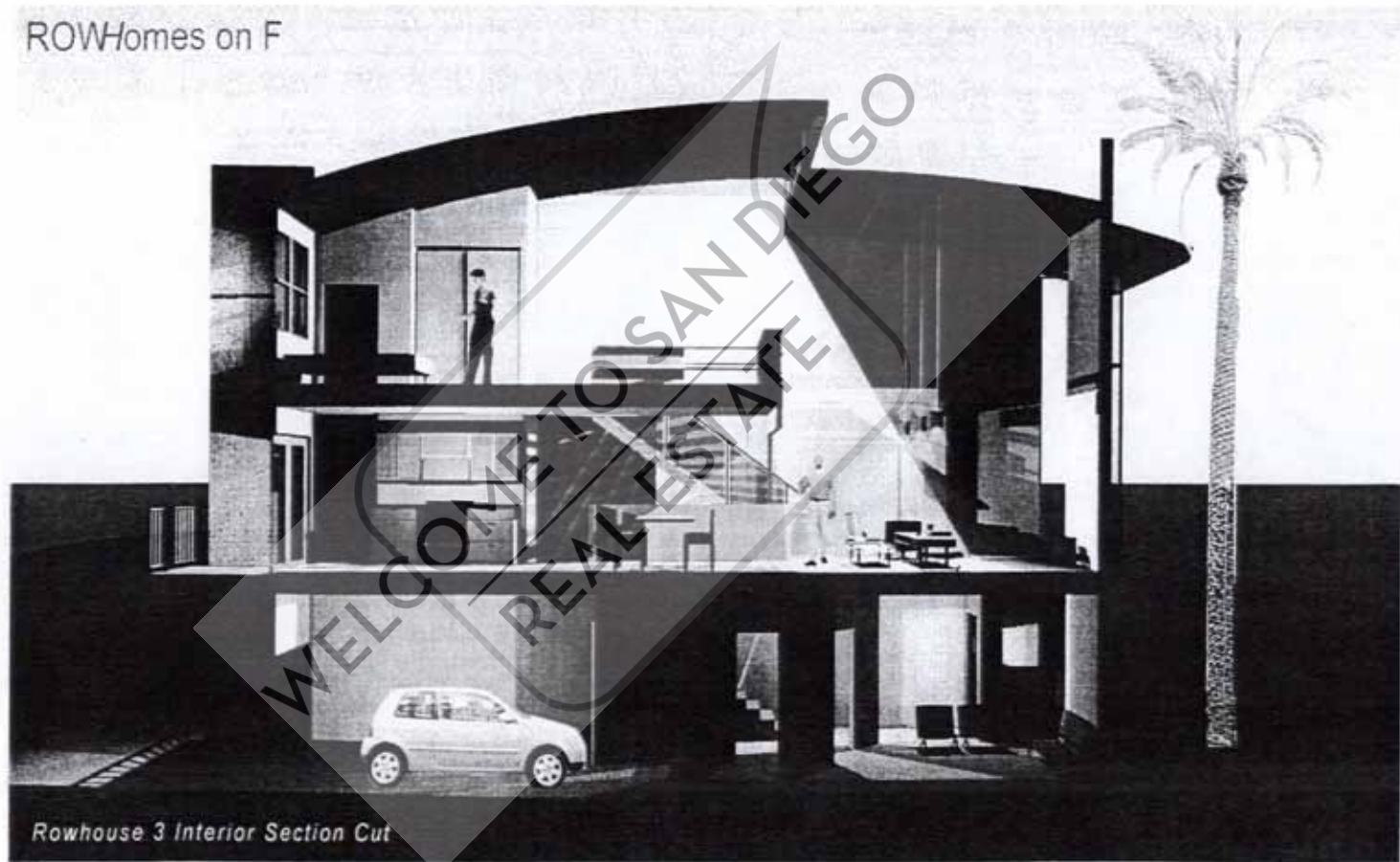


FRONT ELEVATION

- 1 ENTRY
- 2 HALLWAY
- 3 OFFICE/BEDROOM
- 4 BATHROOM
- 5 1 CAR GARAGE
- 6 DECK
- 7 POWDER ROOM
- 8 KITCHEN
- 9 PANTRY
- 10 DINING
- 11 FAMILY ROOM
- 12 CLOSET
- 13 MASTER BEDROOM
- 14 MASTER BATHROOM
- 15 DEN/OFFICE
- 16 ROOF DECK
- 17 FAU

ROWhomes on F
 deFREITAS deSIGN ©

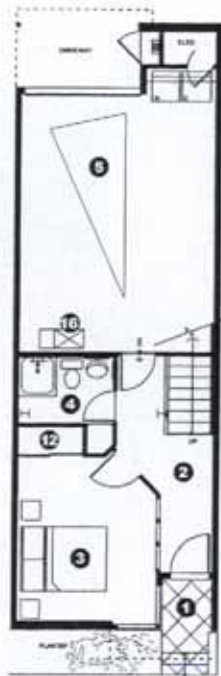
ROWHomes on F



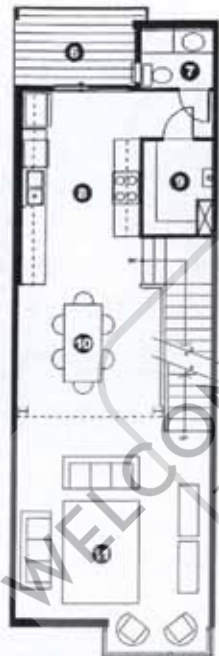
Rowhouse 3 Interior Section Cut

This project will undergo several modifications while under development and construction. We cannot be responsible for announced changes in the models and construction. We do not accept responsibility for any representations made by anyone other than those of the officers of ROWHOMES PARTNERS LLC.

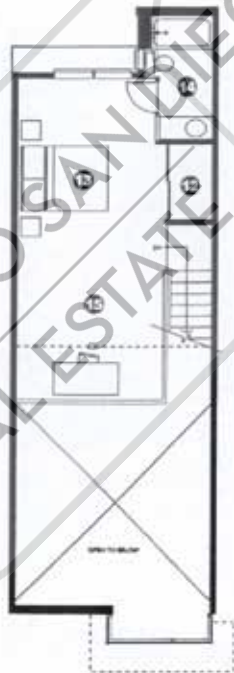
rowhouses **3** **4** **6** **7** **8**



FIRST FLOOR PLAN

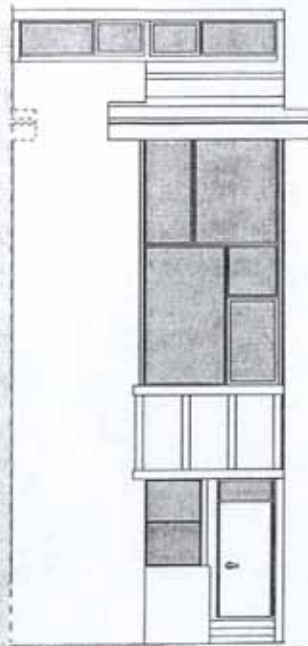


SECOND FLOOR PLAN



THIRD FLOOR PLAN

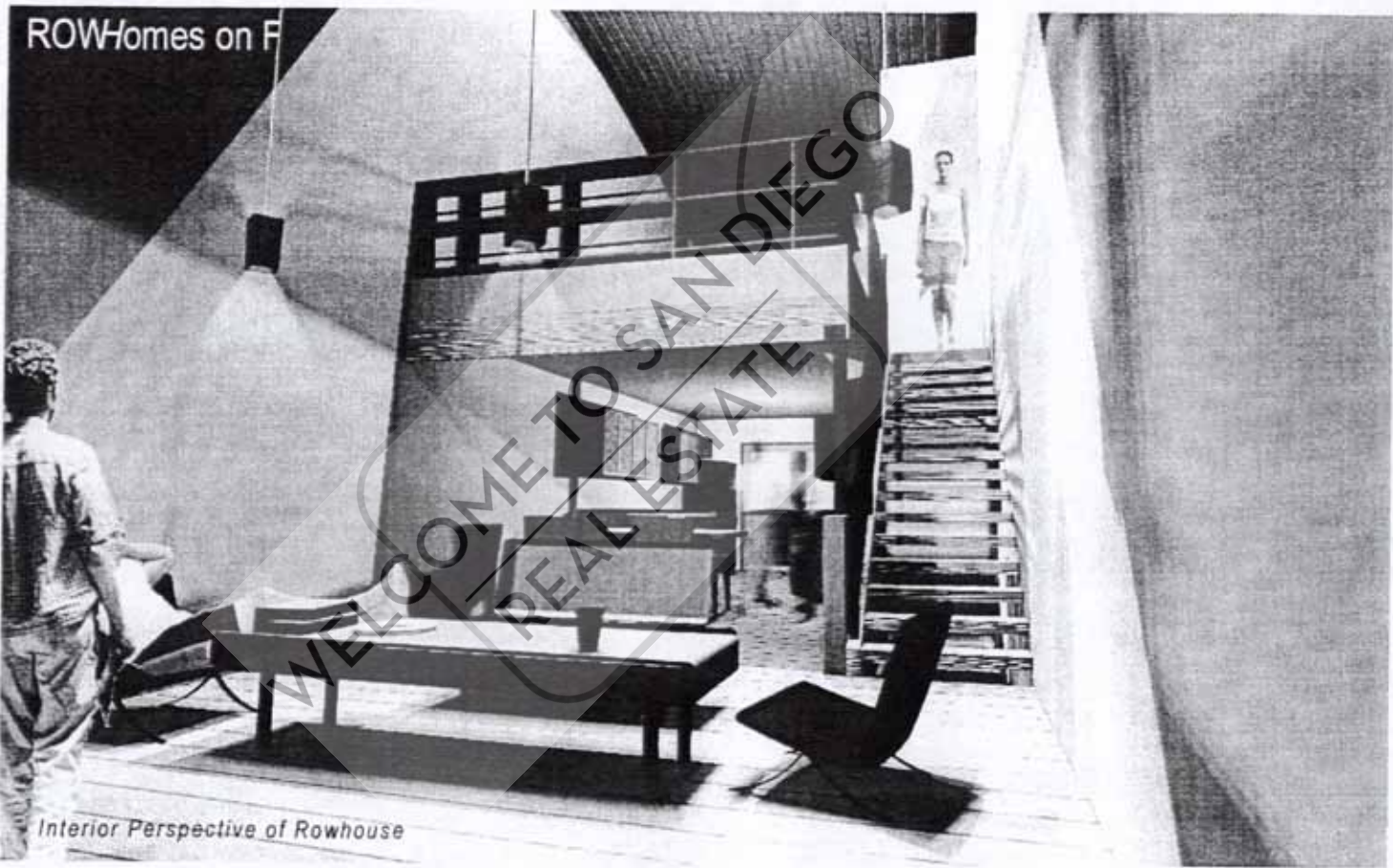
2+ BEDROOMS
2.5 BATHS
Liveable: 1,491 S.F.
Garage: 378 S.F.
Roof Deck: 60 S.F.



FRONT ELEVATION

- 1 ENTRY
- 2 HALLWAY
- 3 OFFICE/BEDROOM
- 4 BATHROOM
- 5 1 CAR GARAGE
- 6 DECK
- 7 POWDER ROOM
- 8 KITCHEN
- 9 PANTRY
- 10 DINING
- 11 FAMILY ROOM
- 12 CLOSET
- 13 MASTER BEDROOM
- 14 MASTER BATHROOM
- 15 DEN/OFFICE
- 16 FAU

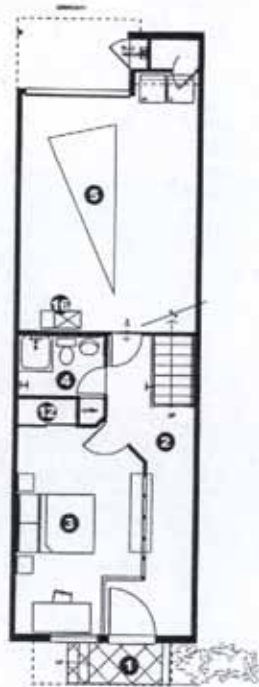
ROWHomes on F
deFREITAS deSIGN ©



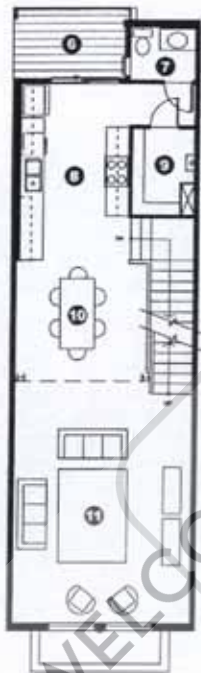
ROWHomes on F

Interior Perspective of Rowhouse

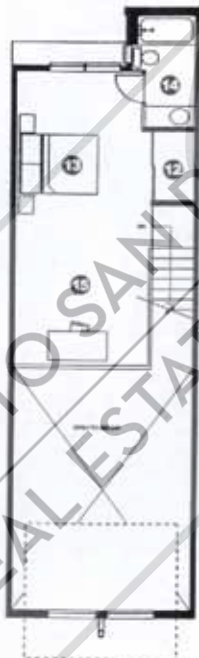
This project will undergo several modifications while under development and construction. We cannot be responsible for unannounced changes in the models and construction. We do not accept responsibility for any representations made by anyone other than those of ROWHOME PARTNERS LLC.



FIRST FLOOR PLAN



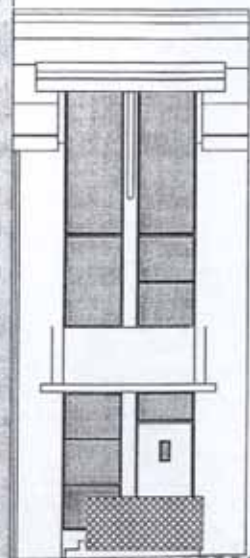
SECOND FLOOR PLAN



THIRD FLOOR PLAN

rowhouses **10** **11**

2+ BEDROOMS
2.5 BATHS
Liveable: 1,654 S.F.
Garage: 365 S.F.
Roof Deck: 60 S.F.



FRONT ELEVATION

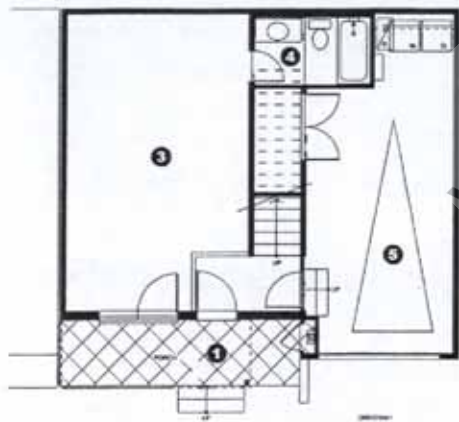
- 1 ENTRY
- 2 HALLWAY
- 3 OFFICE/BEDROOM
- 4 BATHROOM
- 5 1 CAR GARAGE
- 6 DECK
- 7 POWDER ROOM
- 8 KITCHEN
- 9 PANTRY
- 10 DINING
- 11 FAMILY ROOM
- 12 CLOSET
- 13 MASTER BEDROOM
- 14 MASTER BATHROOM
- 15 DEN/OFFICE
- 16 FAU

ROWhomes on F
 deFREITAS deSIGN ©

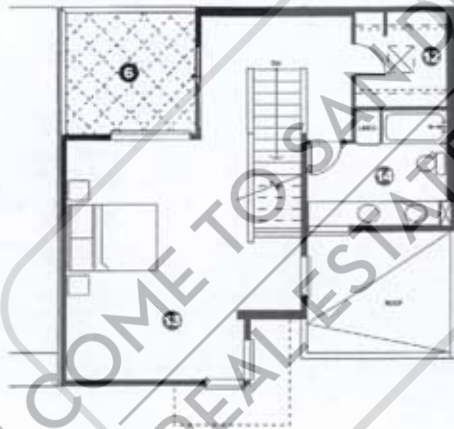
This project will undergo several modifications while under development and construction. We cannot be responsible for unannounced changes in the models and construction. We do not accept responsibility for any representations made by anyone other than those of the affilias of ROWHOME PARTNERS LLC.



SECOND FLOOR PLAN



FIRST FLOOR PLAN



THIRD FLOOR PLAN

rowhouses

13

14

2+ BEDROOMS

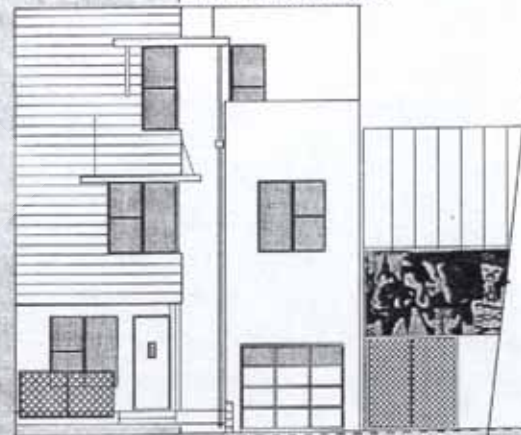
2.5 BATHS

Roof Deck

Liveable: 1,851 S.F.

Garage: 312 S.F.

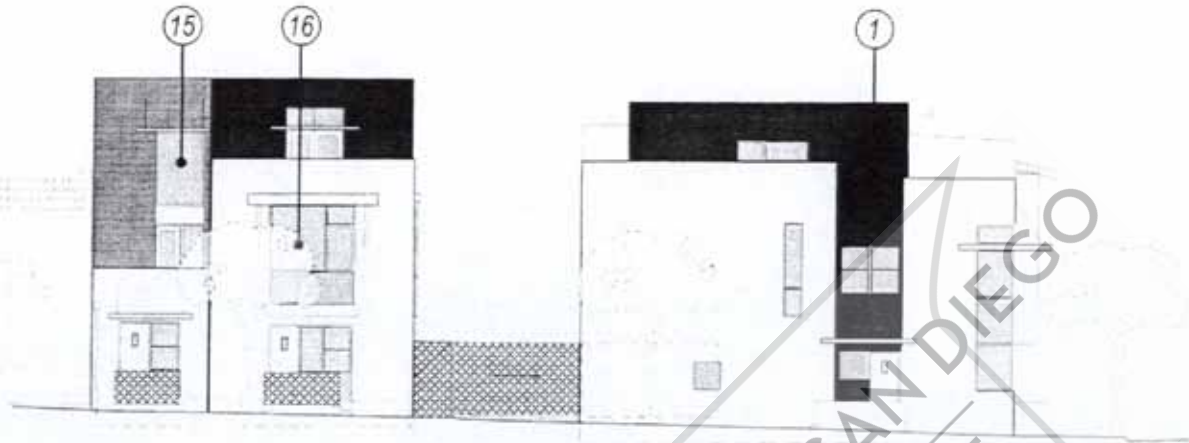
Roof Deck : 97 S.F.



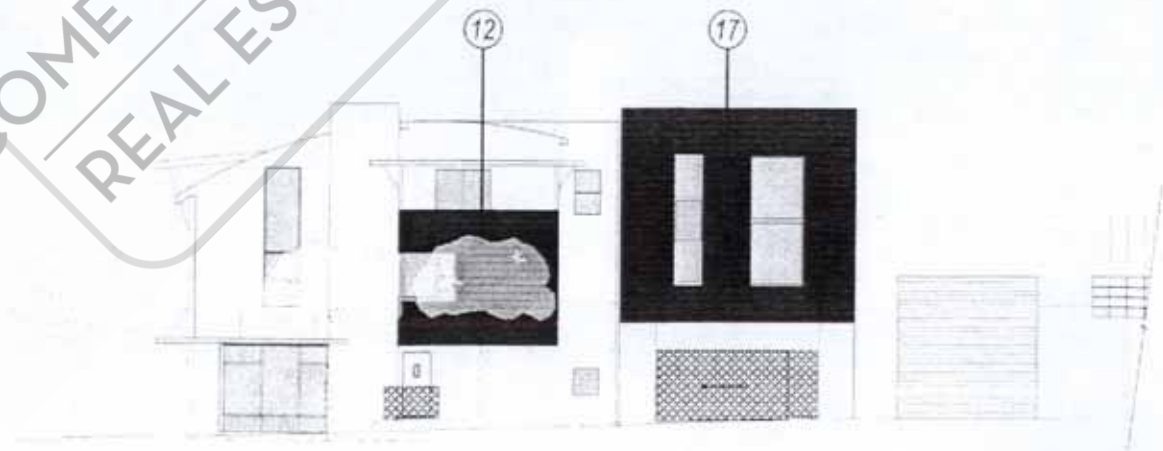
FRONT ELEVATION

- 1 ENTRY PORCH
- 2 HALLWAY
- 3 OFFICE/BEDROOM
- 4 BATHROOM
- 5 1 CAR GARAGE
- 6 DECK
- 7 POWDER ROOM
- 8 KITCHEN
- 9 PANTRY
- 10 DINING
- 11 FAMILY ROOM
- 12 CLOSET
- 13 MASTER BEDROOM
- 14 MASTER BATHROOM
- 15 FAU

ROWhomes on F
deFREITAS deSIGN ©



WEST EXTERIOR ELEVATION - TENTH AVENUE

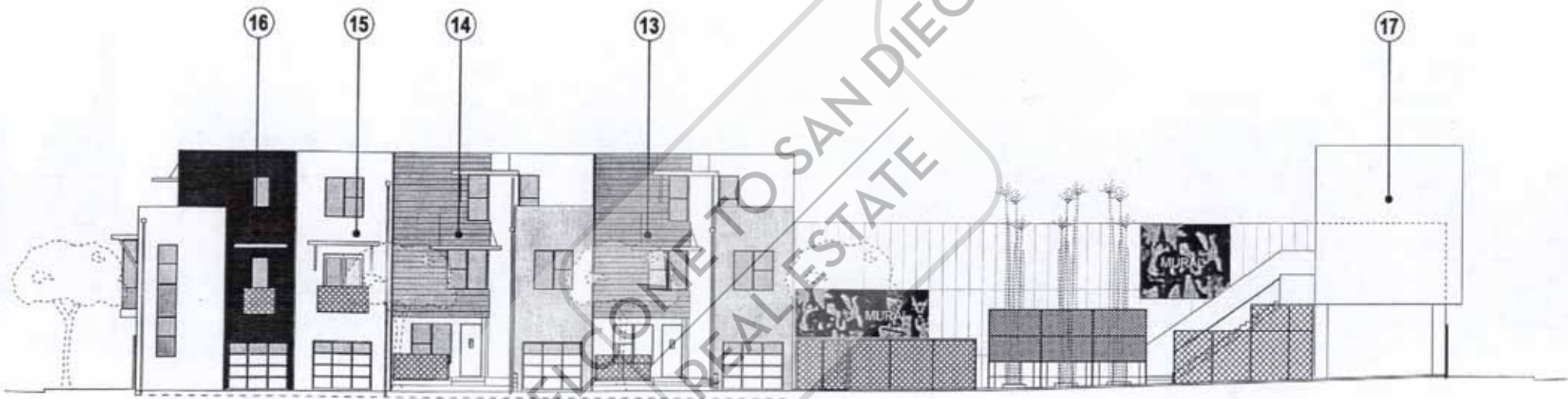


EAST EXTERIOR ELEVATION - ELEVENTH AVENUE

WELCOME TO SAN DIEGO
REAL ESTATE

This project and building system
may be used in any other
development and location. See the
plans for specific details. All
dimensions and quantities of the
work are approximate. All work
shall be in accordance with the city
requirements. See the plans of
the project for the address of
REDAK, INC. (949) 481-1111

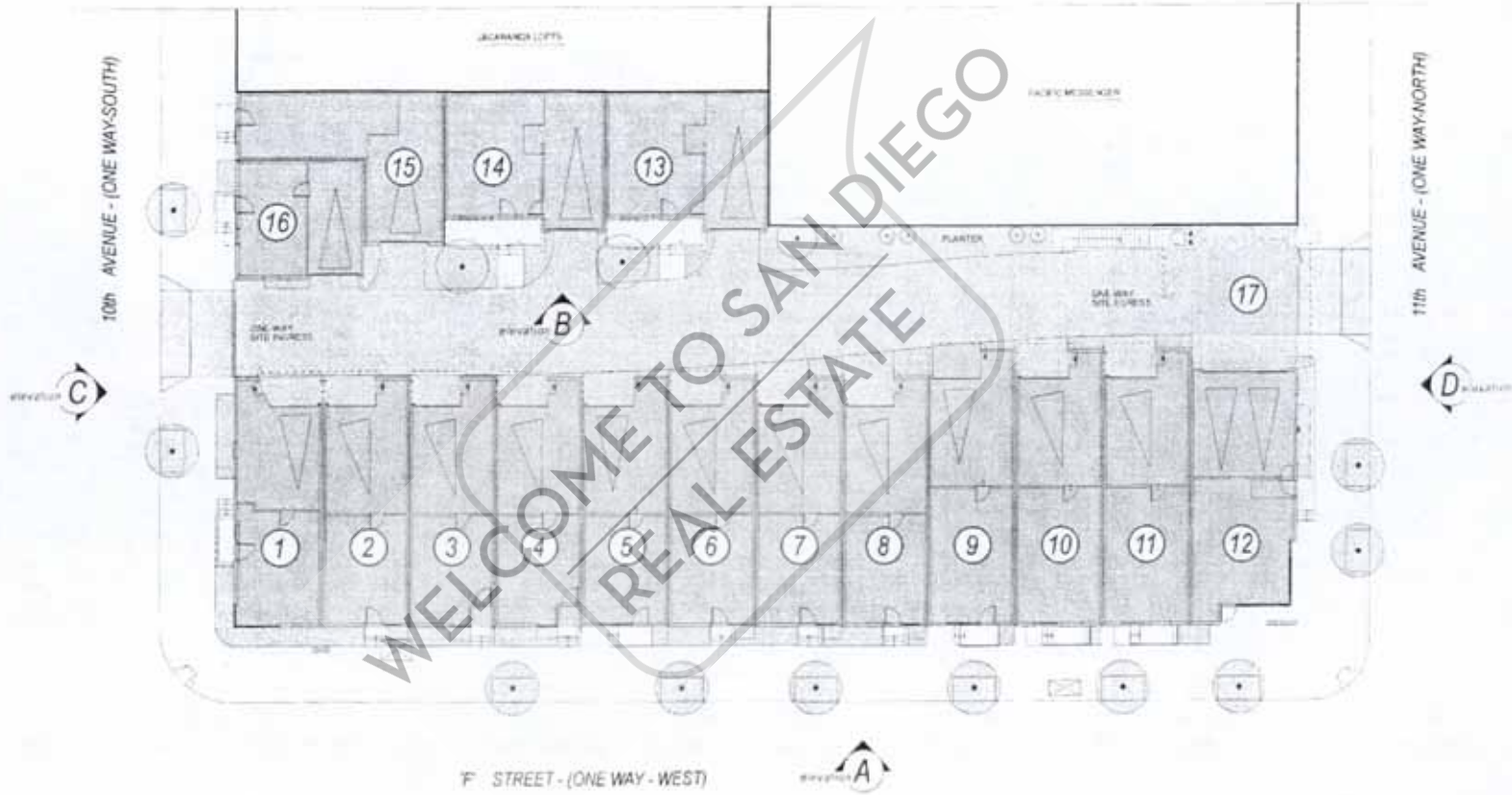
WELCOME TO SAN DIEGO
PEALESTATE



elevation **B**

SOUTH EXTERIOR ELEVATION - 'ALLEY'

This project will undergo several modifications while under development and construction. We cannot be responsible for unannounced changes in the models and construction. We do not accept responsibility for any representations made by anyone other than those of the officers of ROWENOME PARTNERS LLC.



The project will undergo several milestones while under development and construction. We cannot be responsible for construction delays at the analysis and construction. We do not accept responsibility for any representations made by anyone other than those of the office of SCHWABER, HUNTER & ASSOCIATES, LLC.