

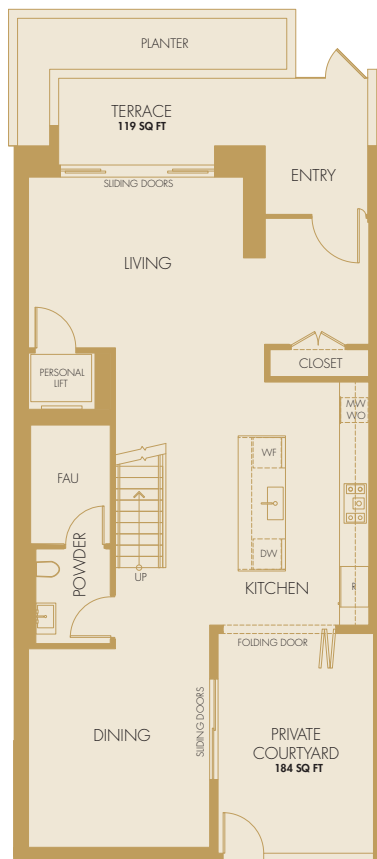
3,663 SQ FT
INDOOR + OUTDOOR

INDOOR 3,020 SQ FT
OUTDOOR 643 SQ FT

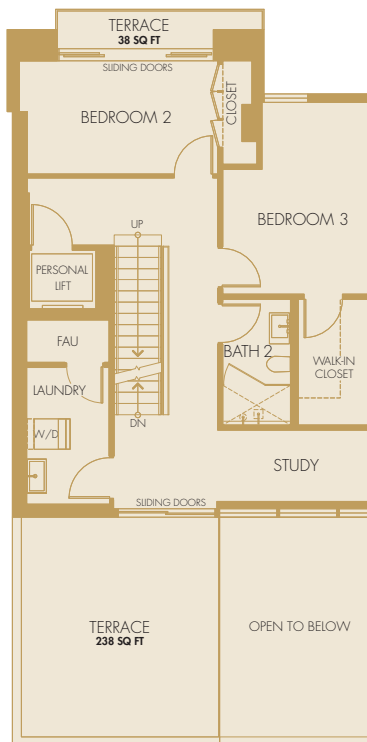
3 BED + 2.5 BATH + STUDY
NORTH VIEW

TOWNHOME

1



LEVEL 1

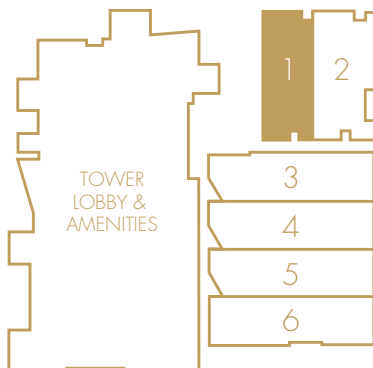


LEVEL 2



LEVEL 3

TOWNHOMES



This is not an offer to sell, but it is intended for information only. The developer reserves the right to make modifications in materials, pricing, specifications, plans, designs, scheduling and delivery of the homes without prior notice. All square footage is an estimate only and subject to change at any time. 6/02/15



THE PARK

BANKERS HILL