

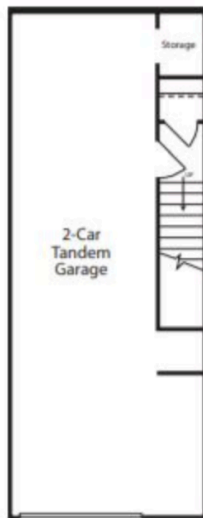
PLAN TWO

1,624 sq. ft. | 2 Beds + Loft | 2.5 Baths

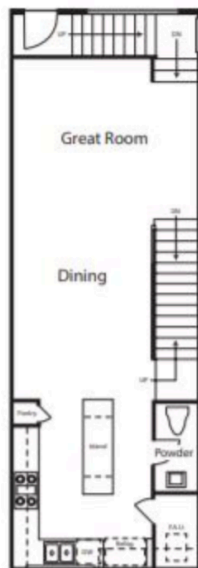


XPO at Bankers Hill. Featuring modern row home living with Downtown as your backyard, and Balboa park as your doorstep. Urban living with chill.

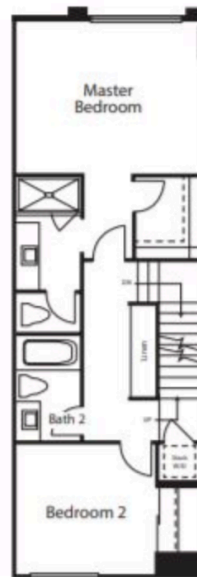
FIRST FLOOR



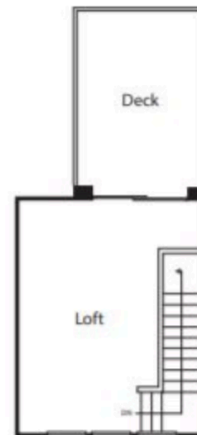
SECOND FLOOR



THIRD FLOOR



FOURTH FLOOR



Brokers welcome | For more information call: 619-728-5882 | XPOparkliving.com | DRE# 01895729

CityMark reserves the right to make modifications in plans, exterior designs, prices, materials and specifications at any time without notice.

CITYMARK
DEVELOPMENT